



# Paddy Fallin

Telephone:  
26-2685  
26-2686  
61-7215

1st Floor,

109a Bathurst Street, SYDNEY

(Cnr. George and B1thunt Sts.)

FEBRUARY, 1969

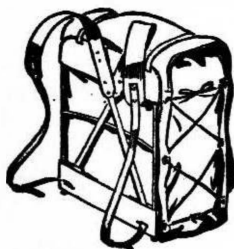
This is not just a catalogue of equipment, it can be the key to a new world for you. A carefully selected outfit from these pages can be the means whereby a person (male or female) of average physical ability and common sense may penetrate into and live for a few days in those secluded places, many of them quite close to large cities, which can only be reached on foot. This world can be of your own choosing. It can be a world of quiet beauty; of peaceful relaxation or one of high adventure. If you so desire it can be a mixture of both. There are walking and mountaineering clubs in all the main cities who will be pleased to help you. We shall be happy to put you in touch with them.

A PADDYMADE RUCKSACK is your friend for life. It is storm proof and made to stand hard knocks. Examine one and note how carefully each point of stress is double stitched and reinforced. They are the product of over 35 years' experience in the making of packs and the friendly suggestions of dozens of walkers.

## H FRAME PACKS

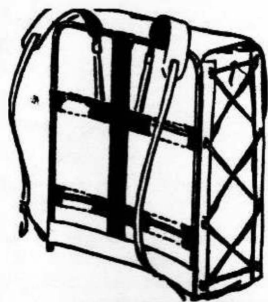
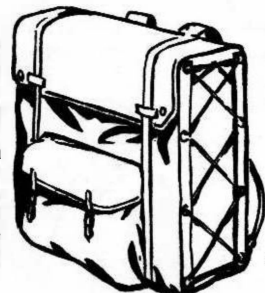
### RAMBLER H FRAME

This is the latest addition to our range of H frames and is designed to carry about 40 lbs. It is a smaller bag, size 19" x 15½" x 9" and is ideally suited for weekend trips. Specially designed for young people and ladies. Weight 4½ lbs. Price \$18.50.



### EXPLORER H FRAME

This is a very similar pack to the MOUNTAINEER. The frame is identical. The pack is 20 in. high 17 in. wide and 7 in. thick actual inside measurements, not counting the 17 in. long waterproof throat. It has a liberal outside pocket. It is made from proofed cotton duck double stitched with linen thread. This pack will carry camp gear and food for 7 to 10 days for an experienced bushwalker. Price \$24.00.



### MOUNTAINEER H FRAME

This capacious pack can carry 70 lbs. or more. It has side lacing to make a compact load when not full, and lightweight bag is made from terylene and cotton fabric, with inner throat of strong plastic coated nylon. Size of bag is 20" x 17" x 9". Bag is easily detached from frame to use as a 3' sleeping bag cover for cold wet conditions. Weight 5¼ lbs. Price \$29.80.

### MOUNTAINEER DE LUXE

Same large size, but has special wear resistant P.V.C. reinforcement at the base of the pack for the really experienced walker on those rugged trips. Price \$33.00.

"A"

## FRAME RUCKSACKS

### Tramper Frame Rucksack

Young people and ladies will find this pack a good one. It will carry sufficient camping equipment



and food for 3 or 4 days or more. Has 3 pockets, capacity about 30 lbs. Weight 4 lbs. Price \$17.65.

### Federation Frame Rucksack

Is specially designed for scrub pushing. Side pockets omitted, 2 extra large back pockets and inside pocket. Large storm flap and double straps on flap.

Price \$21.45.



### De Luxe Federation

Has reinforced bottom to pockets and rucksack plus additional slide fastener pocket in flap. Weight 5 lbs. Price \$25.00.

# RUCKSACKS WITHOUT FRAMES



## BUNYIP RUCKSACK

This "shaped" rucksack is excellent for children. Useful day pack, \$4.70.

## SNOWPACK

Similar to Bunyip but with zipper pocket and rings for waist strap. Bright colours. \$6.45.



## PIONEER RUCKSACK

Is an extra large bag with 4 external pockets and will carry about 40 lbs. of camp gear, \$9.50.

## RUCKSACK ACCESSORIES

**SHOULDER PADS.** Foam rubber uncovered with leather loops, pr. .... 76c  
Foam plastic cloth covered with loops, pr. .... \$1.05

**WATERPROOF PACK LININGS.** Large, sturdy bag of plastic film fits inside rucksack for use when swimming with pack, or very wet trips ..... \$2.15



## BUCKFLI

Wedge shaped and will stand when full. A boon in camp.

10 Pt. Capacity Proofed Japara, weight 3oz. ....	\$1.60
10 Pt. Capacity Proofed Japara with Slide Fastener	\$2.05
15 Pt. Capacity Plastic Coated Fabric, weight 4/oz.	\$1.20
15 Pt. Capacity Plastic Coated Fabric with Slide Fastener,	\$US

## FEATHERWEIGHT DAY PACKS

Made from heavy grade proofed Nylon. Nylon cord shoulder straps. Flat size 17" x 13". Weight 3 oz. .... \$1.75

## SENIOR RUCKSACK

A single pocket, shaped rucksack. Suitable for overnight camping. \$6.60.



## BUSHMAN RUCKSACKS

Have sewn-in cured bottom for extra comfort in carrying. Will hold 30 lbs.

2 pocket model .....	\$7.25
3 pocket model .....	\$8.35

## CAPE GOUNDSHEETS

All the following products are effective ground sheets for sleeping and sitting. In addition, they are treated with waterproofing for extra protection against rain and snow.

### PLASTIC FILM

With reasonable care these groundsheets can be made to last for years.

6' x 3' .....	12oz., \$1.15
7' x 4' 6" .....	20oz., \$2.15

On account of their light weight they are very suitable for young people such as scouts and guides.

### VINYL PROOFED CALICO

For those campers wanting a sturdy groundsheet where weight is not a prime consideration.

6' 0" x 3' 0" .....	22oz., \$2.10
6' 4" x 3' 0" .....	28oz., \$3.21
6' 4" x 3' 9" .....	34oz., \$3.95

### P.V.C. PLASTIC PROOFED JAPARA

This material is the choice of most bushwalkers. It is durable, waterproof, and lightweight. It resists flexing and scuffing to an extraordinary degree. Ends are cut obliquely to give greater length in front when used as a cape.

Approx. length 6' 4", width 3' 9", weight 29oz. ....	\$5.21
As above with hood .....	\$6.21

### PROOFED NYLON

Here at last is a reliable superlight groundsheet cape which is practically untearable. Made from finely woven nylon, proofed with polyurethane. They will give years of use and yet roll up into a tiny bundle and weigh only 9 oz.

Dimensions: 6' 6" x 4' .....	\$1.79
Similar to above, with hood .....	\$7.95

# Paddymade SLEEPING BAGS

"I go camping to have a good time, and a third of that time is spent in bed."

Because they are what good sleeping bags should be: -  
 1. Light in weight. 2. Compact. 3. Warm. Paddymade sleeping bags have become famous throughout the Commonwealth and all over the world. They are covered with green downproof japara. Width at top 29". Width at foot 23". The Regular bag is recommended for people up to 5' 6" tall and the extra-long bag for people up to 6' 6". Bags of greater length and width can be made to order.

**FILLING GUARANTEED ALL NEW DOWN.** Down is still the best insulation and is far superior to synthetic fillings for preserving warmth. The two highest grades of down are Superdown (De Luxe) and first grade feather-down (Standard), which are the only qualities used for Paddymade sleeping bags. All prices include waterproof Carrying Bag.

(When selecting a sleeping bag make sure it is at least 6" longer than your own height)

## "ALPINE" Model

This is a good general purpose bag. The normal bag has no fastener, but various lengths slide fasteners may be added to order. With a "full length Fastener" the bag may be opened out flat and used as a quilt.

	Standard	Deluxe
6' 0" Regular .....	\$19.30	\$24.75
6' 6" Extra Long .....	\$10.60	\$17.15

Double Bags. Two similar length Alpine model bags fitted with full length fasteners may be joined together to make a double bag.

## "KIANDRA" Model

Pillow flap may be drawn up to form hood. Extra well filled. Very compact, warm and light in weight. May have any length slide fastener fitted. Length given is with pillow flap drawn up to form hood.

	Standard	Deluxe
6' 0" Regular .....	\$10.70	\$17.55
6' 6" Extra Long .....	\$11.00	\$30.00

Above bags weigh about 3½lb.

## "HOTHAM" Model

This superwarm hooded bag is made for all who are cold sleepers or who camp at high altitudes or in very cold places. Because of the "box quilting" (see Fig. E) there are no cold spots. Each pocket of down is separated by a membrane of cloth, thus avoiding a draft through stitching. The bag is filled with the very best superdown. Same width all the way down giving plenty of room for movement. Pillow flap may be drawn up to form hood (see Fig. F). Length given is with pillow flap drawn up to form hood. Approx. weight 4½lb.

6' 0" Regular .....	\$34.30
6' 6" Extra Long .....	\$36.80

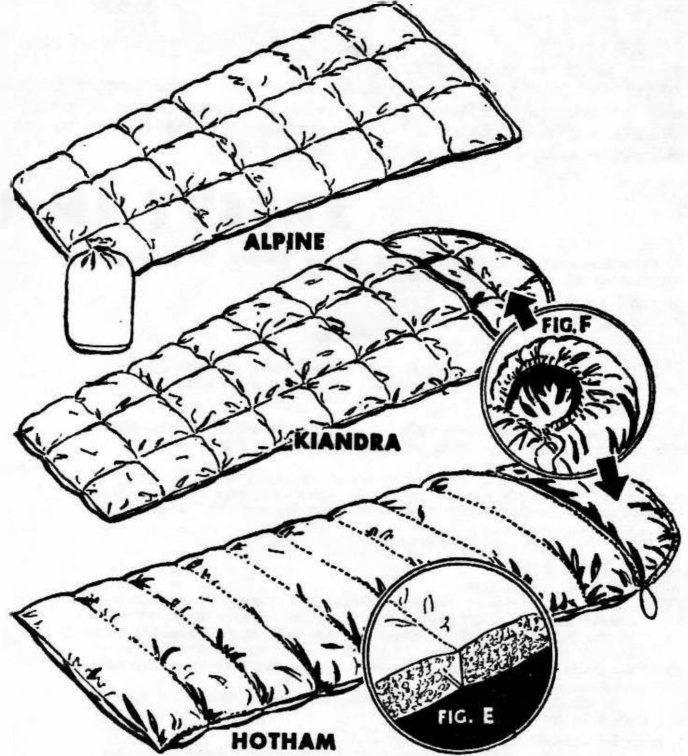
Full length nylon slide fastener fitted for extra \$3.10.

**"BOGONG" SLEEPING BAG.** In response to consistent demands, we have produced a warmer deluxe version of the extra long Hotham bag with a hard-wearing, lightweight terylene covering. It is supplied packed in a proofed nylon carrying bag and total weight is 3lb. 12oz., a saving in weight of 14ozs. Price \$46.35. Full length nylon slide fastener fitted for extra \$3.10.

## "KOSSI" Model

With hood and slide fastener front. Length given includes hood.

	Standard	Deluxe
6' 0" Regular .....	\$13.40	\$19.35
6' 6" Extra Long .....	\$24.95	\$31.80



UTILITY QUILT. 6' 6" x 5'.  
 Generously filled with superdown ..... \$18.45

## SLIDE FASTENERS

All Slide Fasteners fitted with draft resisting overlap. Full length metal slide fasteners fitted to new Alpina or Kiandra bag allow it to be opened out flat. Price \$1.90. These bags may also be fitted to order with a 30" fastener for \$1.25 or 54" fastener for \$1.70. Delivery approx. two weeks.

Sheet Inserts ..... Flannelette \$3.40, Lawn \$3.15  
 Extra carrying bags ..... 99c and \$1.15

Draw Cord at Foot (To Order). The Alpine, Kiandra and Hotham bags may be fitted with a double draw cord at the foot.

## CARE OF SLEEPING BAGS

1. Sleeping bags should be aired out frequently. The sun's rays are an excellent sterilizer and will also re-fluff the filling.
2. Insert sheets should be used whenever possible. This will keep the bag clean, and will prolong its life.
3. Zippers should be handled carefully and slowly. Caution will prevent the goods from catching in the zipper.
4. Always make sure fastener is open before packing bag into its cover.
5. When zippers are hard to work, or are stuck, apply soap, or light lubricating oil to full length of zipper.
6. All Paddymade sleeping bags can be safely dry cleaned or washed provided they are treated similar to silt or wool.

# Paddymade LIGHTWEIGHT TENTS

All "Paddymade" tents are made with the utmost care to stand up to rigorous conditions. All are supplied with Nylon cord and have overlapped doors at both ends. The tent may thus be securely closed against storms or opened at one or both ends for ventilation. In addition, many walkers like to "Abdull" their tents by raising one side to a nearly horizontal position supported by two sticks and the necessary guys. This provides a shady shelter in hot weather.

## GREEN ROT RESISTANT JAPARA for average conditions

Is a high grade finely woven Jong staple cotton cloth weighing 4½ ozs. per square yard which has been treated with a new process to make it water repellent and mildew resistant.

## SUPER LIGHT GOLDEN TAN JAPARA, the choice when weight is important

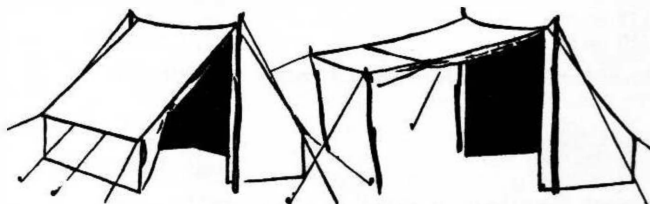
Is an even more finely woven cloth weighing only 2½ oz per square yard. Windproof, Water Repellent and Mildew Resistant.

## STORMTITE JAPARA-For rugged trips

This new cloth is the result of 12 months' research and testing. The cloth is proofed by an entirely new process which makes it as waterproof as an unsealed cloth can be. It is also rot resisting and highly recommended for trips in areas where wet conditions are expected.



"A" TENT



"WALL" TENT

"WALL" TENT "ABDULLED"

### "A" TENTS (No w.u.)-

One Man "A" Tent, 7' long x 4' wide x 3' 6" high .....	\$17.60
Two Man "A" Tent, 7' long x 5' wide x 4' high .....	\$19.60
Three Man "A" Tent, 7' long x 7' wide x 4' high .....	\$21.75

### WALL TENTS -

"Glen" Two Man Tent, 7' long, 4' wide, 4' high, 12" wall	\$22.85
"ERA" 3-Man Tent, 7' long, 5' wide, 4' 6" high, 18" wall	\$26.40
"TASSIE" 4-Man Tent, 7' long, 6' wide, 4' 6" high, 18" wall	\$27.80

Rot Resistant Green Japara	Approx. Weight in Green lb. oz.	Super-Light Golden Tan Japara	Green Stormtite Japara
	2 6	—	\$23.75
	2 15	\$20.70	—
	3 6	—	—
	3 3	\$24.10	\$27.50
	4 0	\$27.90	\$32.20
	4 7	—	\$33.00

Super Light Tents are about 25% lighter than the Standard Green Japara tents. Stormtite Tents are about 15% Heavier. N.B.-All above tent sizes are less seam measurements.

### SOU-WESTER TENTS -

Have doors at one end only. Length 7' 6", width 5', height 4' ", walls 1' 3" high. To reinforced top at each side of the roof may be used for securing storm guys. Nylon cords supplied with tent. Super Light \$33.60, Stormtite, \$38.35.

### NEW DESIGN

BELLENDER TENTS give 3ft. extra length with only a few ounces extra weight. Made from the new STORMTITE JAPARA.

The Era Bellender is based on the successful and popular Era Wall tent but the zipp closing doors are designed so that they peg out to enclose an extra triangle 5ft. at the base and 1ft. 6in. to the apex at each end, thus the total extreme length is 10ft. The triangle at each end allows for storage of pack and equipment without interfering with the 7ft. x 5 ft. sleeping space. The tents are supplied complete with telescopic poles, pegs and cords. Weight complete 6½ lbs.

Price \$41.95



KARKAMPA

## FAMILY OR LIGHTWEIGHT CAR TENTS

Model	Long	Wide	High	Weight	Size Rolled	Price
"I'oura" .....	7'	7'	5' 6."	2' wall 8 lb.	16' x 5'	\$34.00
"Kark.ampa" .....	8' 6"	7'	6' 6."	2' 6" wall 11 lb.	1 r x 10'	\$44.15

These tents are made from heavyweight green or blue proofed japara. An enlarged version of our proven waiters tents, which will give many years' good service, these are ideal for light car owners, motor cyclists, motor scooter campers and scout troops who seek a large but lightweight tent which does not require a fly.

**TENT PEGS, POLS AND ACCRIES**

Tent Pegs. 8' Steel Wire, 1Sc ea. 8' Aluminium Wire, 3c ea. 10" Wall Pegs, 4c ea. 12" Heavy Duty, 13c ea. Peg Sheaths 12c ea.  
 Bulldog An&le Peg. 5/4' Sc ea., 7/4' 6c ea., 9' Sc ea., 12' 1Sc ea., 5' Anker Pegs 13c ea.  
 Tent Conn. Small 65c ea., large 75c ea.  
 Nylon Tent Cont. 20yd reel 80c ea.

**Tent Poles (Alum.Inlum)-**

Bogong 4' 8'	4-Sect .....	\$2.75 ea.
Bulldog 4' 6'	3-Sect. Telescopic .....	\$1.50 ea.
S O'	4-Sect. " .....	\$3.40 ea.
6 O'	4-Sect. " .....	\$3.80 ea.
6 6'	4-Sect. " .....	\$3.95 ea.

**WEATHERPOOF CLOTHING**



KANGAROO JACKET



KIWI JACKET

**Kaaproo Pub** - Pullover type hooded jacket in proofed nylon. Front zipp pocket, and zipp at throat Draw cord in hem. So compact it fits into its O'Jl pocket. Colours, blue, olive, red; SZCS W, SM, M and OS; weight, 8oz. Price, \$9.90.

**Khri Jackets** - "Kiwi" hooded oil-skin zipp front Parkas, considered by experienced walkers to be an indispensable section of their gear. Weight 1lb. 12oz. Improved model, all sizes. Price, \$15.80.

**Kiwi Jackets reproofed**, \$2.0t, Proofing for reproofing Kiwi jackets. per bottle, 75c.

**DECO Proofed Nylon Parka** zipped front, concealed hood in collar, SSW, SW, W, \$9.30; SM, M, OS, \$9.9t.

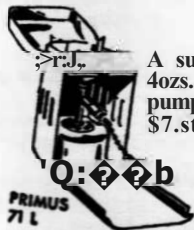
**Mountalacer Wool Shirts** .... \$12.40  
**Strina Singlets with sleeves** \$2.49  
 no sleeves \$1.99

**STOVES & LAMPS**

**BUTANE GAS STOVES AND LAMPS**

This latest development is a great boon to campers. All the convenience of a gas stove with you in camp. Turn it on, light it! We have a complete range of gas stoves from the tiny Bleuett, which can be easily carried in a walker's pack, to double burner Porta-gas stoves on a stand. Porta-gas refill stations are now found almost everywhere.

Spare cartridges ..... 60c each  
 Lumagaz 'C' Butane incandescent lantern 1r high. Complete with two cartridges ..... \$9.60  
 waterproof matches, per box, 3c. Meta Tablets Pkt of 50 99c



**PRIMUS 71L**

A superlight stove for walkers - weighs only 1lb. 4ozs. Burns for 1 1/4 hours on 1/3 pint shellite. No pumping. Metal container acts as windshield. \$7.st.

SheWte, 2 pint tin ..... 45c

**OPTIMUS SR**

Lightweight shellite folding stove in metal case ..... \$12.00

**ACETYLENE LAMPS**

"Tinnacle" ..... Cast aluminium, 8' high, 4/4' reflector. For more rugged use ..... \$7.95  
 "Tinnacle" Small M lamps, \$5.40. Medium hand lamps, \$1.25.

Aftilable in 2lb. tins with press-in lids .... 55c

**HEAD LAMP ELECTRIC TORCHES**

"GCN La" - headlamp torch for all outdoorsmen. May be used as a hand lamp. Powerful focused beam - uses 5 M n cella \$3.5t. (nan). Spare globea for tie each tie, M.JLU oBer ton:bes a C... 1 au2erw - folding aluminium and mica, \$1.50.

**PRIMUS PORT-A-GAS**

Primus De-Luxe Stove 2064 .....	\$24.51
Primus Port-a-matic 2063A .....	\$21.50
Primus 2057 for 2005 cylinder .....	\$8.74
Primus Picnic Stove 2056A .....	\$8.15
Primus 2150 100W Lamp .....	\$9.50

**Cylinders**

2000-- 1/4 lbs. ....	\$5.15
2005-1 1/4 lbs. ....	\$9.25
2007-2 1/4 lbs. ....	\$11.75
2010-4 1/4 lbs. ....	\$14.50

**Accessories**

Dcruble Adaptor 9200 .....	\$5.56
Barbecue 9201 for de-luxe or port-a-matic Stoves	\$6.57
Mantles 6176 .....	15c

ff

LUIT IIOI

## ALUMINIUM WARE

Aluminium squat type billies, 1½ pint, \$1.08; 2 pint, \$1.22; 3 pint, \$1.44; 5 pint, \$1.72.  
Aluminium tall billies: 2 pint, \$1.26; 3 pint, \$1.50; 4 pint, \$1.58; 5 pint, \$1.90; 8 pint, \$2.38.



Canteen set (frying pan, deep plate billy) \$3.50.  
Camping Outfit, comprising billy, frying pan, 2 food containers, plate, plus detachable wire handle, \$2.95.

Mess Kit — small f/pan plate, billy, mug aluminium \$2.00  
Fry-Pan-Plate Combination S ts, with detachable handle, Sin. .... \$1.95  
Comblnatfour knife, fork, spoon set 95c and 55c.  
Aluminium Food Jars, with screw top lids — 4oz. 17c; 6oz. 22c; and 20oz. 27c.  
Food Bags — Cambric — 17c, 18c, 24c, 28c.

## FOODSTUFFS

Vesta Beef Curry with Rice .....	49c
Vesta Sweet and Sour Chicken .....	49c
Vesta Chicken Curry with Rice .....	49c
Edmonds Beef Casarole .....	49c
Edmonds Smoked Lobster Newburg with Rice .....	49c
Edmonds Chicken Supreme with Rice .....	49c
Edmonds Savoury Omelet .....	36c
Edmonds South Seas Omelet .....	36c
Jostant Mashed Potato .....	25c
Surprise Beans .....	30c
Surplse Peas .....	26c
Beef Steak S'tw Freeze Dried .....	55c
Beef Mince Freeze Dried .....	55c
Butter Concentrate — 12 oz. tins .....	50c
Condensed Milk, 7oz. tubes .....	20c
"Ovaltine" Tablets (75) .....	25c
Egg Powder, 8oz. tins .....	\$1.33
Lemon and Lime Powder .....	40c
"Kraft" Personal Serves in plastic. Jams, honey, tomato sauce, etc., per serve .....	3c
Continental Soups .....	16c
Honey, 6oz. tube .....	20c
Ration Biscuits .....	20c
Dehydrated Potato, 4oz pkt .....	39c.
" Mixed Vegetable, 4oz pkt .....	45c.
" Carrot, 2 oz pkt .....	25c.
" Cabbage, 2oz pkt .....	25c.
" Onion, 2oz pkt .....	25c.

English "Kaye" Canoe Plans — Full list on application. Each ..... \$2.30

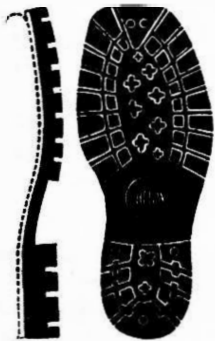
## CANOE PLANS, ETC.

Bert Hopkins Kayak Plans ..... \$1.50  
N.B. Please add postage when ordering.

## BOOTS, HOBNAILS, ETC.

Sherpa Rubber soles and heels, \$3.50 set.  
Treble Hobk - (rustproof), per lb. .... 90c  
Tricoonis No. 6 - 11 m.m. 13 m.m. or 15 m.m., ea. . 14c  
Tricoonis No. 3, each ..... 12c  
Tricoonis section, each ..... 70c  
Leather Drealng -  
    G.Y. small tin ..... 25c  
    G.Y. large tin ..... 42c  
Hydraphane 16oz. tin ..... \$1.70

Non-shrink miners' pink socks, sizes 8½in. to 12in. in heavy pre-shrunk wool and nylon (pair) ..... \$1.50  
Norwegian rag socks (pair) ..... \$1.50  
Norswear heavy oiled wool  
    short ..... \$1.65  
    Long ..... \$2.55



Tramping Boot



Sherpa Boot



Mountain Boot

## BOOKS

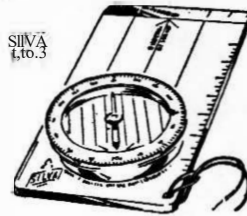
"Bushwalking & Camping", Paddy Pallin's handbook of bushwalking, completely revised edition ..... 75c  
"Mountaineering Equipment", published by the M.U.M.C. .... 45c  
"Walk" ..... 25c  
"Tasmanian Tramp" (Hobart Walking Club) .... 30c  
"Skyline" (Launceston Walking Club) ..... 30c  
"The Bushwalker" ..... 30c  
Wildflowers of Kosciusko State Park, Illustrated in colour ..... \$1.75  
Bush Lore (N.Z.) ..... \$1.88  
Snowy Mountains Walks ..... 85c  
"Safety in the Bush" ..... 40c  
N.B. Please add postage when ordering.

## MAPS

Large Blue Mountains ..... Including Postage 80c  
Myles Donphy's Warrambongles Map ..... 45c  
S.E.N.E., C.N., & C.S. Tourist, each ..... \$1.05  
Military Maps (Official Agents for all Published  
S.N.f adM.: ..... 1:  
S.M.A. 1" = 1 mile printed maps. Please specify  
Bt.: J g .....  
All published N.S.W. Lands Dept. 2"=1 mile and Tourist maps ..... 80c  
Plus large stock of N.S.W., Victorian and Tasmanian walkers' maps.

## COMPASSES

"Silva" Compasses. The most outstanding compass for walkers and skiers. A reliable precision instrument incorporates Protractor.



No. 5 Dry Compass ..... \$2.95  
No. 3 Oil Filled ..... \$4.95  
No. 2 Oil Filled ..... \$6.30  
No. 10 Wrist Compass Oil Filled ..... \$6.85  
No. 15 T.D.C.L. .... \$14.25

Bert Hopkins Kayak Plans ..... \$1.50  
N.B. Please add postage when ordering.

## BOOTS (Contin.)-SPECIAL IMPORTED LINES

Kastinger Mõmdaln Boot  
Sturdy boot for Alpine work ..... \$30.00

Rieker Mountain Boot  
A surdy boot for walking and rock climbing .... \$16.90

Masten Rõck-<limhina Boot  
Famous English, smooth sole ..... \$17.00

Mõbus Rõck-<llmbliq Boot  
Austrian patterned sole ..... \$12.65  
R.D's. French rock-climbing boot ..... \$22.00

## STUBAI CLIMBING EQUIPMENT

Especially imported direct from the Austrian firm of Stubai who are known by climbers the world over for reliability. All axes, piton hammers, carabiners and pitons are braded for your security.

908 Aschenbrenner Model, light Ice Axe with curved Adze. Length 75 cm.-100 cm..... each \$24.75

Specially selected High Temife Steel Alloy Pitons

930 ~~SSI~~ V Angle Piton made from very high tensile steel alloy 3 sizes.  
105 m/m ..... each \$1.95  
135 m/m ..... each \$2.90  
150 m/m ..... each \$2.05

932 Lost Arrow Piton Horizontal Chrome Molybdenum 3 sizes.  
70 m/m ..... each \$2.10  
90 m/m ..... each \$2.15  
110 m/m ..... each \$2.20

934 Fiechtl Form Piton Horizontal Chrome Molybdenum 3 sizes.  
90 m/m ..... each \$2.10  
110 m/m ..... each \$2.15  
130 m/m ..... each \$2.20

936 Kaiser Form Piton Horizontal Chrome Molybdenum 3 sizes.  
70 m/m ..... each \$2.10  
90 m/m ..... each \$2.15  
110 m/m ..... each \$2.20

High Tensile Drop Forged Steel Pitons

940 Horizontal Knife Blade 130, 150, 170 m/m ..... each \$1.00  
941 Vertical Knife Blade 130, 150, 170 m/m ..... each \$0.83  
942 Horizontal Spatula form 70, 90, 110 m/m ..... each \$0.93  
943 Vertical Spatula Form 70, 90, 110 m/m ..... each \$0.83  
944 Horizontal Fiechtl form 90, 110, 130 m/m ..... each \$0.93  
945 Vertical Fiechtl form 90, 110, 130 m/m ..... each \$0.83  
946 Horizontal Kaiser Form 70, 90, 110 m/m ..... each \$0.93  
947 Vertical Kaiser Form 70, 90, 110 m/m ..... each \$0.83  
948 Horizontal French Form Broad 70, 90, 110 m/m ..... each \$0.60  
949 Horizontal French Form Narrow 70, 90, 110 m/m ..... each \$0.60  
952 Channel Form 140 m/m ..... each \$0.85  
958 Abseil Piton V Shape 160 m/m ..... each \$1.05  
959 Abseil Piton U Shape 140 m/m ..... each \$1.05  
960 Ice Piton 200 m/m ..... each \$1.00  
961 Ice Piton with ring 200 m/m ..... each \$1.20  
962 Ice Screws 150/7 m/m ..... each \$2.65

Carabiners made from High Tensile Light Alloy

973 D Shape with safety screw ..... each \$4.35

Carabiner made from High Tensile Steel

981 Oval Shape Carabiner ..... each \$2.60  
982 Oval Shape with safety ring ..... each \$3.40

984 D Shape Carabiner ..... each \$2.70  
985 D Shape with safety ring ..... each \$4.60  
980 Pear Shape ..... each \$1.90  
986 Marwa Model ..... each \$3.65  
987 Marwa Model with safety screw ..... each \$3.95  
977 Super T Section with safety ring ..... each \$4.80

Climbing Piton Hammer

990 Short Pick Light ..... each \$3.70  
992 Chisel End Heavy ..... each \$4.00  
994 Universal with curved pick ..... each \$3.70

ADDITIONAL ROCK-CLIMBING LM AVAILABLE

## COMPLFFE LIST OF GEAR & WHAT IT WEIGHS

The following list is taken from Paddy Pallin's book of Australian Bushcraft "Bushwalking and Camping", price 75c plus postage.

We will assume that you are sharing tent and cooking gear with a companion (for this is the usual custom). It should be possible to make further reductions in the weight.

	U - 1	Weight
	lb.	oz.
Tent (Two Man), 7 x 5A .....	2	14
Pegs in Cas, 1-do. ....		7
Aluminium Jars and Bags .....		3½
2 Billies and Cover .....	1	0½
Frying Pan and Billy Hooks .....		6
For Two People .....	4	15
One Person's Share .....	2	7½
Large Supply of Humour and Co monsense (essential) .....	—	—
Groundsheet (Cape) .....	1	1
Spare Sheet .....		7
Down Sleeping Bag and Cover .....	3	2
Rucksack Steel Frame .....	4	8
Towels .....		6
Soap in Box .....		2
Knife, Fork, Spoon .....		4½
Plate .....		5½
Mug .....		2½
Spare Shirt, Shorts and Socks .....	1	8½
First-Aid Kit .....		9
Canvas Bucket .....		2½
Comb .....		½
Toothbrush and Paste .....		1
Dish (Cloth and Teatowel) .....		1½
Swimming Trunks .....		4
Repair Kit .....		4
Torch .....		10½
Sweater .....		12
Note Book and Pencil .....		2
Compass and Map .....		2½
Candle-end and Matches, in Watertight Container .....		3
Total .....	17	11

## MISCELLANEOUS ITEMS

"Binie Bags", made from 3 M polythene. Useful for camping without tent or for emergencies when ski-touring, 7' X 2' 8" ..... 75c

### Space Blankets--

Made from a material specially developed for insulation uses in outer space. Superwarm, lightweight, waterproof, 56" X 84" ..... \$7.99

### Race Blankets-

56" x 84" 2oz. of space age reflective material, a life saver in emergencies.

Silver/Silver ..... \$2.40  
Silver/Gold ..... \$3.35

### Baby Carrier-

With alloy frame. Suitable for children 6 months to 3 years ..... \$10.30

**GUARANTEE.** All goods are guaranteed. Goods which are found faulty by reason of faulty material or bad workmanship will be replaced or money refunded.

**MAIL ORDERS.** If, on inspection, goods are found unsuitable in any way goods should be returned immediately and money will be refunded. N.B. - Please indicate second choice if possible when ordering.

Weights and sizes shown are only approximate and cannot be guaranteed exact.

AD prices subject to alteration without notice.

<b>Insect Repellent--</b>	
Kokada, tube or bottle .....	40c
Haven Large .....	80c
Small .....	60c
Water Sterile Tablets .....	\$1.12
Fly Veils .....	23c

## STRETCHERS

Lead .....	
Marechal-lightweight French stretcher, steel .....	\$8.00
Stretcher Overlays .....	\$2.70

## AIR MATTRESSES, ETC.

<b>COMO</b> .....	<b>\$7.85</b>
<b>HIT</b> .....	<b>\$5.95</b>
<b>Foot Pump</b> .....	<b>\$1.60</b>
<b>Air Pillows</b> .....	<b>\$1.35</b>

# SAFETY IN THE BUSH

By Search and Rescue Section of the R.S.W.

### BEFORE LEAVING HOME

- Pack map and compass.
- Be sure you know how to use them.
- Pack First-Aid kit.

i.e. - details of projected itinerary, indicating proposed starting and finishing points, and state date of expected return.

### ON TRIP

The leader should continually check the progress of the party. He should frequently refer to the map and check the party's direction in so doing.

All should know the intended route and should take notice of landmarks such as creek junctions and ridges. They should look behind every now and then in case it is necessary to retrace their steps.

There should be the minimum size of a party.

### DON'T TAKE RISKS

#### (1) FLOODED STREAMS

..... risk lives in flooded streams or rivers. Flood water is far more dangerous than it looks. Unless every member in the party has been trained to deal with the floodwater conditions that exist at the time, wait until the stream goes down or follow the safer route. If caught by floodwaters make sure that your pack is shed in an emergency.

#### (2) FIRE HAZARDS

Be careful with your camp fires and always extinguish them with water before you leave. Avoid any bushfires when bushfires are burning. If you are trapped by a fire, cover up with woollen clothing and take rapid, decisive action to get downhill or upwind of the fire.

#### (3) STEEP COUNTRY AND ROCKY SLOPES

Where the climbing becomes steep, that a member could fall, and such a fall be a serious proper rock-climbing life is must be taken w the route avoided.

In going up or down loose slopes the party must stay together and spread out along the slope to avoid hitting one another with falling rocks. In narrow places the party should negotiate the slope one at a time.

Every member should carry his or her own pack. Carrying two packs in steep country may be chivalrous, but it is also dangerous.

#### (4) SNOW CONDITIONS

In case of sudden exposure to extreme cold and particularly in snow conditions, first put on all your warm clothing with atherproof cover on top then keep moving steadily in the direction of the nearest shelter, keeping out of the wind as much as possible.

### WHEN IN TROUBLE

#### (i) SEVERE INJURIES

Should a member of your party become injured, send for help. It is best to send two people with a written description of the injured person's condition, an accurate description including map reference (if possible) of his location, and any other relevant information. These people should contact the Search and Rescue Section without delay and also make use of any expert local help available.

#### (ii) IF YOU LOSE YOUR WAY

Sit down and plan logically as soon as you feel you are lost. Do not become more lost by continuing to walk aimlessly. By using a map and recollecting the country traversed, decide which is the best route to safety. From the time you are uncertain of your location, mark the way you are going by breaking twigs, scratching arrows, etc. Leave dated notes giving the names of your party and what you intend to do. Leave them in conspicuous places and wherever you stop for a meal or camp.

Check your supplies of food and ration them if necessary.

N.B. - Please indicate second choice if possible when ordering.

FOR PRICES OF SKIS AND ACCESSORIES, SKI CLOTHING, ETC., SEE SEPARATE LIST,

Prices Subject to Alterations Without Notice.

*Paddy Pallin*

THE BIG NAME  
IN EQUIPMENT FOR  
MOUNTAINEERS  
BUSHWALKERS  
ROCKCLIMBERS AND  
SKI TOURERS